

Myelodysplastic syndromes (MDS)

**Blood
cancer
UK**



About this booklet

This booklet has been written by: Consultant Haematologists Dr Sally Killick and Dr Dominic Culligan; Philip Alexander, Counsellor and Cognitive Behaviour Psychotherapist; Clinical Nurse Specialists Geke Ong and Janet Hayden; and reviewed by Professor David Bowen, Honorary Professor of Myeloid Leukaemia Studies and Consultant Haematologist. The booklet has also been reviewed by patients. Thank you to Chris Dugmore and Claudia Richards.

We're a community dedicated to beating blood cancer by funding research and supporting those affected. Since 1960, we've invested over £500 million in blood cancer research, transforming treatments and saving lives. To find out more about what we do, see page 119.

bloodcancer.org.uk

0808 2080 888

(Mon, Tue, Thu, Fri, 10am–4pm, Wed, 10am–1pm)

support@bloodcancer.org.uk

A list of references used in this booklet is available on request. Please email us at **information@bloodcancer.org.uk**

Disclaimer

We make every effort to make sure that the information in this booklet is accurate, but you shouldn't rely on it instead of a fully trained clinician. It's important to always listen to your specialist and seek advice if you have any concerns or questions about your health. Blood Cancer UK can't accept any loss or damage resulting from any inaccuracy in this information, or from external information that we link to.

The information in this booklet is correct at the time it was printed (March 2019)

Date of next review: March 2022

Blood Cancer UK, 39–40 Eagle Street, London WC1R 4TH

020 7504 2200 **hello@bloodcancer.org.uk** **bloodcancer.org.uk**

© All rights reserved. No part of this publication can be reproduced or transmitted without permission in writing from Blood Cancer UK.

Registered charity 216032 (England & Wales) SC037529 (Scotland)

Contents

- 2 Contributing charities
- 4 Introduction
- 6 Myelodysplastic syndromes (MDS) at a glance
- 11 Who gets MDS and why?
- 15 Signs and symptoms of MDS
- 19 How is MDS diagnosed?
- 25 What are the types of MDS?
- 31 What is the prognosis?
- 37 Treatment for MDS
- 55 The psychological impact of MDS
- 75 Living with MDS
- 91 MDS specialist centres
- 97 Places you can get help and support
- 104 Glossary
- 109 Appendix
- 116 Our health information
- 119 About us
- 129 Useful information and details

Contributing charities

This booklet has been compiled by Blood Cancer UK, MDS UK Patient Support Group and Leukaemia Care in a joint collaboration. Although you are reading the version supplied by Blood Cancer UK, all the wording is the same in each organisation's booklet. This booklet does not endorse any specific product or brand – any names mentioned are for information only.

About MDS UK

MDS UK Patient Support Group provides information, assistance and advice to patients and families affected by myelodysplastic syndromes (MDS). We offer a helpline, newsletter, website, chat forum and meeting groups nationwide to facilitate contact with other MDS patients and their families. Based at King's College Hospital, MDS UK is the only national support group solely dedicated to MDS.

About Leukaemia Care

Leukaemia Care is dedicated to providing information, support and advice to blood cancer patients, their carers and loved ones. Whether they need a listening ear from our Patient Services team, a buddy to chat to who has been in a similar position, a visit to one of our support groups, or good quality, trusted information about a diagnosis, treatment or side effects, we are here for them all.

About Blood Cancer UK

We're the UK's leading blood cancer research charity. We fund research to improve treatment and care for people living with all types of blood cancer, and we provide anyone affected with information and support.

Acknowledgements and further thanks to The Irish Cancer Society for their permission to use information and images from their MDS booklet.

This booklet has been endorsed by the Leukaemia & Lymphoma NI charity, which funds research into the causes and cures of leukaemia, lymphoma and myeloma in Northern Ireland.



Introduction

Being diagnosed with a myelodysplastic syndrome (MDS) can be a shock, particularly when you may never have heard of it.

This booklet has been written to help you understand more about MDS. It describes what the various forms are, how they are diagnosed and treated and also the expected outcome (prognosis). It will also provide information on coping with the emotional impact of an MDS diagnosis.

At the back of this booklet there is space to write down your diagnosis and important contact details.

For more information, your haematologist or clinical nurse specialist will be able to provide advice that is specific to your diagnosis.

Throughout this booklet you will see a number of quotations. These are the real experiences of MDS patients and will hopefully help you to understand your situation a bit better.



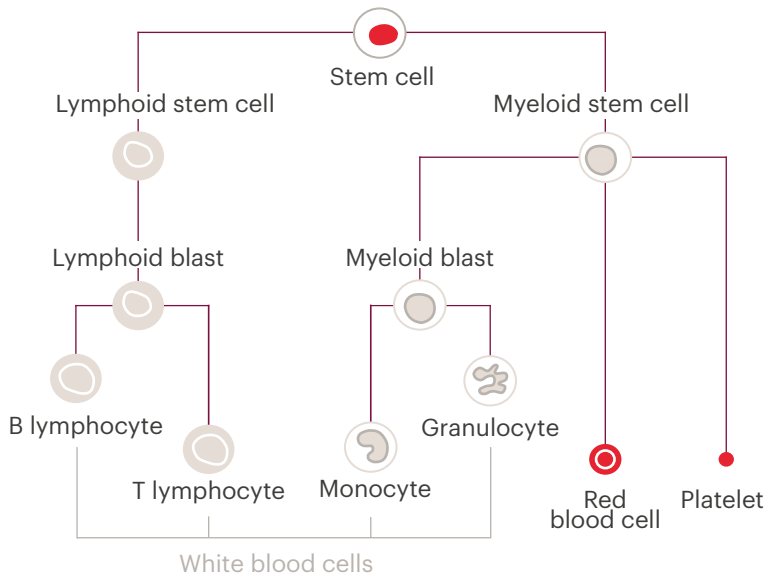
Our Support Services Team offer practical and emotional support for anyone affected by blood cancer. Contact us on **0808 2080 888** or **support@bloodcancer.org.uk**

Myelodysplastic syndromes (MDS) at a glance

What are myelodysplastic syndromes?

The myelodysplastic syndromes, or MDS for short, are a group of diseases in which the production of blood cells by the bone marrow is faulty. It is a type of cancer and sometimes may be referred to as bone marrow failure. The bone marrow is located inside some of your bones and it is the factory where blood cells are made. This is where the problem lies in MDS.

Blood cell development



The bone marrow makes three main types of blood cells:

- red blood cells that carry oxygen around the body
- white blood cells that fight infections
- platelets that prevent bleeding.

What causes MDS?

In MDS, the bone marrow is usually more active than normal, yet the blood cells it produces are not healthy (we refer to that as 'dysplastic'), do not work as well as they should, and many die either before they reach the bloodstream or shortly afterwards. This results in the number of blood cells in the bloodstream being reduced. This is referred to as a 'cytopenia'. Some patients have just one type of blood cell that is low (such as red blood cells), however, sometimes MDS can cause a reduction in all the types of blood cells. When this occurs, it is called 'pancytopenia'.

Can MDS lead to any other conditions?

In addition to low blood counts, the myelodysplastic syndromes share a common tendency to develop into acute myeloid leukaemia (AML) over time.

In MDS, the bone marrow has a number of immature abnormal cells called blasts. In some patients with MDS the number of blasts increases with time. Acute myeloid leukaemia (AML) is defined as having more than 20% blast cells. The risk of AML occurring depends on the type of MDS, and some patients may never progress to AML.

Is MDS a cancer?

MDS is a form of bone marrow cancer, although its progression into leukaemia does not always occur. It is included in the World Health Organisation Classification of Haematopoietic (blood and bone marrow) Tumours.



There's more information on AML in our booklet
Acute myeloid leukaemia (AML) – see **page 116**.

MDS is not an infectious disease and it cannot be passed on to other people.

If you're worried, get in touch on **0808 2080 888**
or email **support@bloodcancer.org.uk**

Who gets MDS and why?

MDS is a rare disease. It may be diagnosed at any age but it is very rare in children and young adults. This booklet deals with MDS in adults.

The typical age for patients to develop MDS is around 75 years old. About 9 out of 10 patients are over 50 years old at the time of diagnosis. Men are slightly more likely than women to be diagnosed with MDS.

The cause of MDS remains largely unknown, although there are many research groups around the world who are trying to improve our understanding of why it occurs and in who. There are certain factors that may increase your chance of developing MDS and these include the following.

Previous chemotherapy with or without radiotherapy

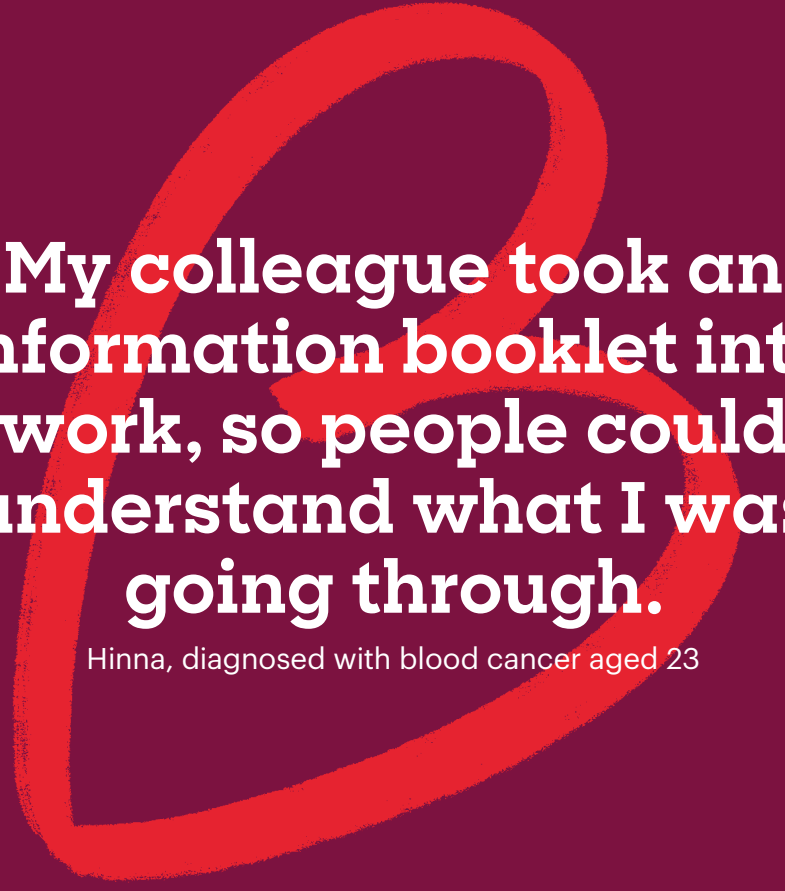
This treatment may have been given in the past (usually for other cancers). It is thought that the treatment damages the bone marrow and may cause MDS in some patients. This is called secondary or therapy-related MDS, as it is secondary to the previous chemotherapy or radiotherapy.

Inherited disorders

Very rarely, MDS can be inherited or may develop from another rare blood disorder. For this reason, young patients may be tested for any diseases that are linked to MDS. However, for the vast majority of patients, MDS will not be passed down to children and is not an inherited genetic disease.

Environmental factors

Exposure to toxic chemicals such as benzene may marginally increase the risk of MDS, but such exposure is now uncommon.



**My colleague took an
information booklet into
work, so people could
understand what I was
going through.**

Hinna, diagnosed with blood cancer aged 23

**Anaemia is the most
commonly experienced
symptom in MDS.**

If you're worried, get in touch on **0808 2080 888**
or email **support@bloodcancer.org.uk**

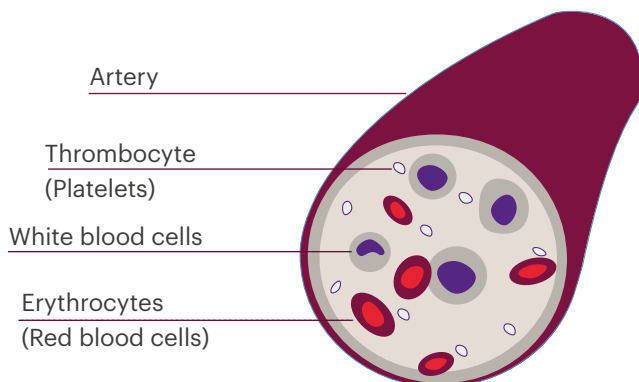
Signs and symptoms of MDS

Symptoms vary from person to person and depend on which blood cells have become reduced in your bloodstream.

About eight in ten patients have anaemia, while about two in ten present to their doctor with infections or bleeding.

Anaemia is due to a lack of red blood cells (also referred to as low haemoglobin), which may lead to fatigue and shortness of breath, even on light exertion.

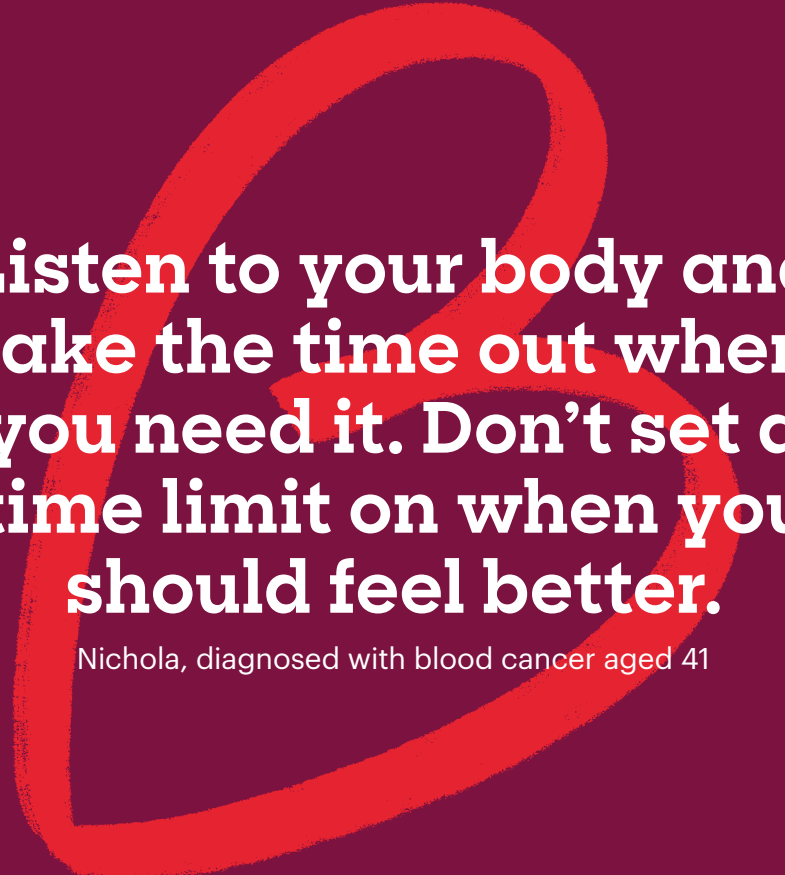
Blood cells in a major blood vessel (artery)



When your platelet count is low, you can suffer from easy bruising and bleeding. This can sometimes manifest itself as a rash on your skin. These are tiny bleedings under the skin called petechiae and often appear where clothes are tight fitting like around the ankles or waist. Nose or gum bleeds can also be a sign of a low platelet count.

Recurrent and persistent infections are another common symptom of MDS due to low white blood cell counts.

Some MDS patients have no signs or symptoms and are diagnosed by chance as a result of a routine blood test.



**Listen to your body and
take the time out when
you need it. Don't set a
time limit on when you
should feel better.**

Nichola, diagnosed with blood cancer aged 41

**Waiting for your test results
can be an anxious time.
Try talking to family and
friends, or a patient support
organisation.**

If you're worried, get in touch on **0808 2080 888**
or email **support@bloodcancer.org.uk**

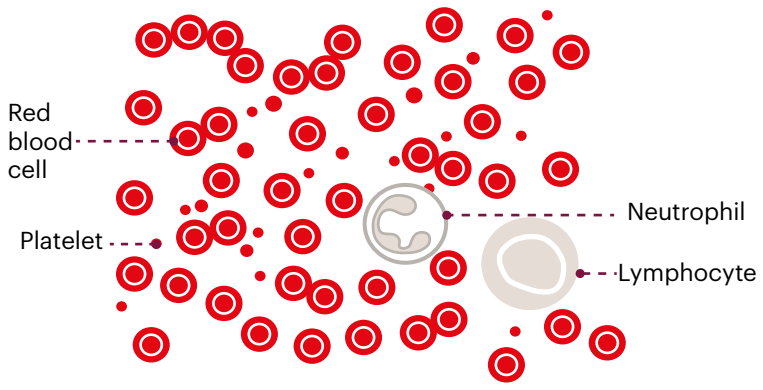
How is MDS diagnosed?

There are two main tests to confirm a diagnosis of MDS.

Full blood count

Low blood counts are picked up by a simple test called a full blood count (FBC). The laboratory performing the test will then examine the blood cells on a slide (called a blood film) under the microscope. If you are found to have changes on the blood film that suggest MDS, you will usually be referred to a blood specialist (haematologist). It is important to rule out other causes of a low blood count so the doctor will ask general health questions and give you a physical examination.

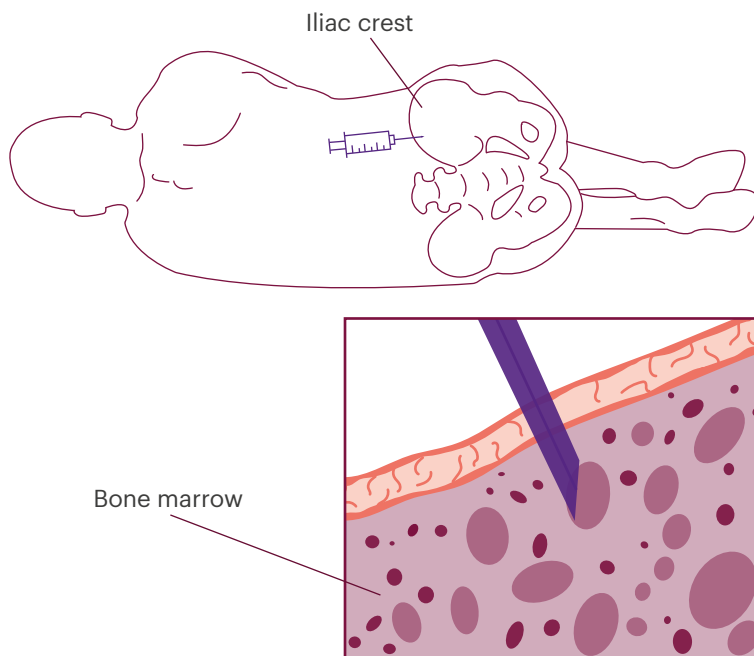
Normal blood film



Abnormal blood film



Bone marrow biopsy



Bone marrow test

As MDS is a disease of the bone marrow, a bone marrow test is usually needed to diagnose the condition or monitor response to treatment.

What does a bone marrow test involve?

A bone marrow test is usually performed as an outpatient, meaning you don't need to stay in hospital overnight and can go home after the procedure.

During a bone marrow test, a small liquid bone marrow sample is taken followed by a biopsy, generally from the pelvis. The doctor will numb the area with local anaesthetic and insert a needle into the bone marrow cavity in order to take the sample. The procedure usually takes around 20–30 minutes, but you should allow an hour of your time. It may be uncomfortable at the time, or later that evening, but simple paracetamol is usually enough to relieve the pain. You may be asked to lie on your back after the procedure for 10 minutes to reduce the risk of bleeding. A small dressing or plaster is applied to the site.

How long do I have to wait for the results?

Preparing the sample and analysing all the results can take two to three weeks. The bone marrow sample is examined by a doctor under a microscope to look for changes seen in MDS. Additional tests are often requested on the bone marrow sample, which may help to make the diagnosis and provide information about how the disease will behave (prognosis).

These tests include cytogenetics (sometimes called a 'karyotype'), which is the study of the changes in the structure of the chromosomes in the affected cells. In addition, there is a general move towards molecular testing (to look for DNA mutations), which we hope will lead to more precision and therefore make care more personalised.

However, at the moment we are still learning what the molecular changes may mean for MDS patients.

If the bone marrow changes are not clear and there is doubt about whether or not you have MDS, your doctor may decide to monitor your blood counts and repeat the bone marrow test at a later stage.

A bone marrow sample may not be necessary in some cases, for example if the results are unlikely to affect treatment decisions.

You can read about the experiences of other people who are going through or have been through something similar on the websites of patient support organisations. It is important at an early stage to get support and information from recommended and reputable sources, as the internet can present misleading and unvetted information.



You can find details of different support organisations on **pages 97-103**.

It's important to know and understand your exact diagnosis. You could ask your treatment team to write it in the back of this booklet.

If you're worried, get in touch on **0808 2080 888** or email **support@bloodcancer.org.uk**

What are the types of MDS?

There are many types of MDS and this can be difficult to understand. Spend time talking to your doctor or nurse so you understand how you will be treated.

Your doctor will describe the type of MDS that you have, as each type can behave differently. The World Health Organization (WHO) has developed a regularly updated classification for separating the different types of MDS. This was updated in 2016 and replaces the older classification of MDS in 2008. Both classifications may still be referred to and therefore the old classification can be seen in the appendix at the end of the booklet.

This classification system is based on the blood results, the appearance of the bone marrow, the number of abnormal immature blast cells and any chromosome changes found. The immature cells are called blasts, which may be increased in some of the types of MDS.

There are six broad types of MDS included in the current 2016 classification. These are:

- MDS with single lineage dysplasia (MDS-SLD)
- MDS with multilineage dysplasia (MDS-MLD)
- MDS with ring sideroblasts (MDS-RS)
- MDS, unclassifiable (MDS-U)
- MDS with isolated del(5q) or with 1 additional abnormality
- MDS with excess blasts (MDS-EB); MDS-EB-1 and MDS-EB-2.

Red blood cells



Healthy, mature red
blood cells



Abnormal ('dysplastic')
red blood cells

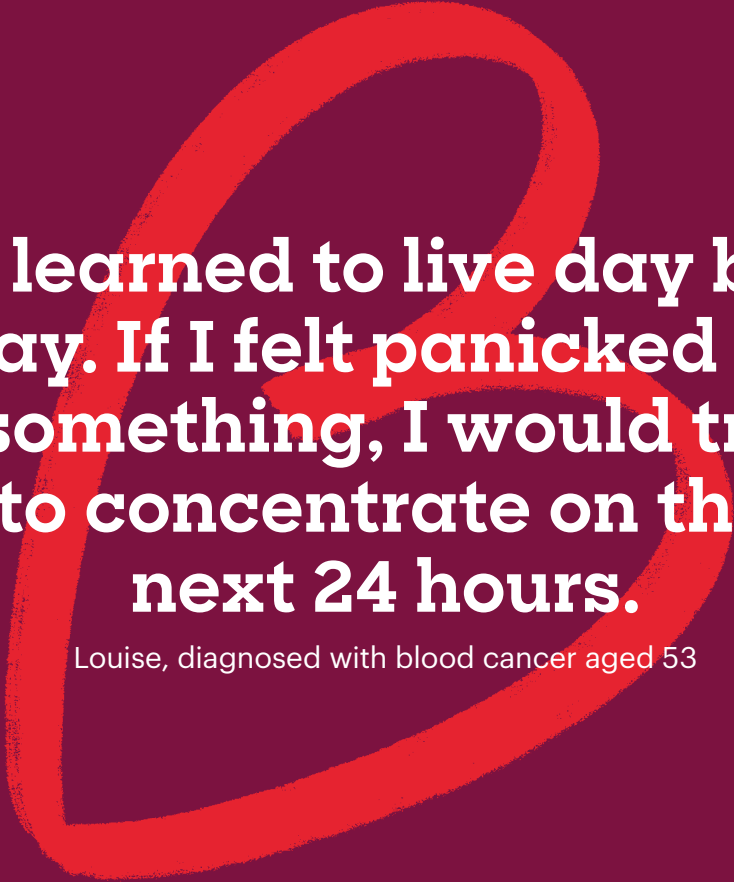
The terminology used can be difficult to understand, so ask your doctor to explain which type of MDS you have. Dysplasia means that the bone marrow cells are abnormal in their appearance. Sideroblasts are young red blood cells that have a very distinctive ring of iron granules seen under the microscope. MDS with isolated del(5q) means the chromosome tests show part of the chromosome 5 is missing.

What does high risk and low risk MDS mean?

It is often easier to consider whether the type of MDS you have falls into what is called a LOW risk group or a HIGH risk group. The 'risk' refers to your chance of developing acute myeloid leukaemia (AML) and your life expectancy (survival).

In the low risk disease group a patient has about a 1 in 10 chance of progressing to AML. The low risk group includes MDS-SLD, MDS-MLD, MDS-RS, MDS-U and MDS with del(5q) either in isolation or with 1 additional abnormality. In contrast, the risk of developing leukaemia is greater in the high-risk disease group (MDS-EB).

The separation into these groups is important as the treatment of patients with low-risk and high-risk disease can differ. Your doctor may use the WHO classification to decide whether your disease is low or high risk, although it is usually better to use the prognosis score discussed next.



I learned to live day by day. If I felt panicked by something, I would try to concentrate on the next 24 hours.

Louise, diagnosed with blood cancer aged 53

**Your prognosis (outlook)
can depend on many
different things. Scoring
systems can help to
estimate your level of risk.**

If you're worried, get in touch on **0808 2080 888**
or email **support@bloodcancer.org.uk**

What is the prognosis?

Prognosis refers to the expected outcome or survival from MDS and is therefore different from classification.

Your prognosis can depend on many factors, including those not related to MDS, such as your general fitness and age. However, to allow your doctor to make the right treatment decisions, MDS doctors and scientists around the world have designed a number of scoring systems to help predict how your MDS is likely to behave. Over time, these scoring systems have evolved to give more accurate estimations. The most commonly used scoring system is the revised International Prognostic Scoring System (IPSS-R). This replaces the previous IPSS.

Explaining the scoring systems in more detail

The British Society of Haematology MDS Guidelines recommend using the IPSS-R as a scoring system.

The IPSS-R score is calculated from:

- your blood count results at the time your MDS is diagnosed
- the number of abnormal immature cells (blasts) in your bone marrow at diagnosis
- the chromosome test results from your bone marrow at diagnosis.

The calculator adds together the individual scores for the above, to give a final score, which puts you into one of the following IPSS-R risk groups:

- very low
- low
- intermediate
- high
- very high.

The risk groups describe the expected risk of developing acute myeloid leukaemia (AML) and expected survival. This helps your doctor to identify and discuss with you the best treatment choices for you as an individual.

It is important to understand that the expected outcomes for each group give an indication of what may happen in that group of patients as a collective. This gives a useful framework for a discussion about the future and the options for treatment, but it is not possible to give a precise outcome figure for an individual patient. As our understanding of the molecular changes seen in MDS increases, this may allow us to more accurately work out an individual patient's outcome and guide treatment further.

Doctors sometimes refer to 'low risk' and 'high risk' MDS. If doctors are using the older IPSS, 'low risk' refers to patients with Low and Intermediate-1 categories, whilst 'high risk' refers to patients with IPSS Intermediate-2 and High categories.

The risk designation is more difficult with the more recent IPSS-R. 'Low risk' includes Very Low and Low categories, and 'high risk' includes High and Very High categories. As yet, the risk designation for the IPSS-R Intermediate group has not been confirmed.



For more information about the risk and survival predicted in each group, see **page 112** in the appendix.

UK MDS Forum and British Society of Haematology (BSH) MDS Guidelines

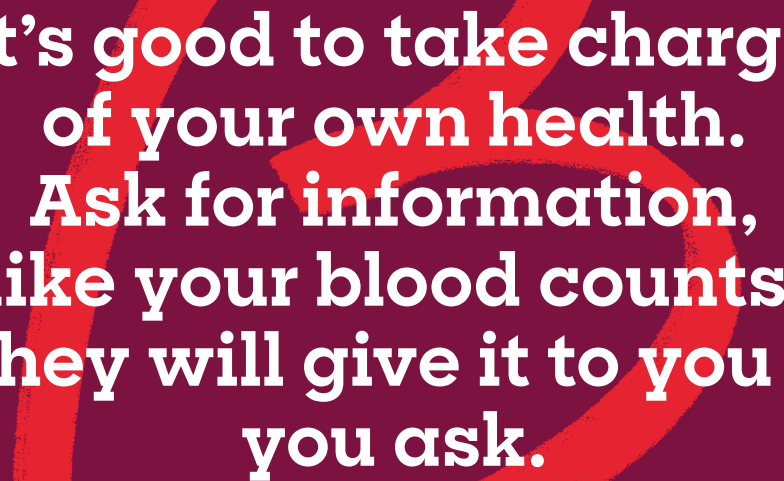
A group of expert haematologists, with a specialist interest in MDS, has prepared guidelines for the diagnosis and treatment of adult MDS. These are updated periodically to reflect changes in medical practice. The content of the treatment section of this booklet is based on the BSH guidelines.

It is important to understand that although guidelines represent the collected opinions of a group of experts based on best clinical practice from available evidence, they are only guidelines. In most cases, a patient's treatment will be based on these but a doctor may decide that it is not in the best interests of a specific patient to be treated exactly, or even broadly, according to the guidelines. If this is the case for you, then your doctor will discuss the reasons for this.

The UK MDS Forum is an expert organisation open to healthcare workers and scientists with an interest in MDS. The aim of the Forum is to increase MDS awareness through education and improve access to clinical trials for patients with MDS in the UK.



You can find the full version of the BSH guidelines online at **www.b-s-h.org.uk/guidelines**



**It's good to take charge
of your own health.
Ask for information,
like your blood counts.
They will give it to you if
you ask.**

Nabeela, diagnosed with blood cancer aged 21

**An MDT involves doctors,
nurses and other
healthcare professionals
putting their heads
together and deciding
the best treatment
specifically for you.**

If you're worried, get in touch on **0808 2080 888**
or email **support@bloodcancer.org.uk**

Treatment for MDS

The way that MDS behaves varies from person to person and depends on the type of MDS that you have.

The types of MDS have been described in detail earlier in this booklet. Treatment is based on British guidelines agreed by MDS specialists, and your care will be discussed in your local multidisciplinary team (MDT) meeting.

What is an MDT?

Your diagnosis and treatment will be discussed and reviewed by a team of clinical specialists including haematologists in your local area. They are called your multidisciplinary team (MDT). They hold regular meetings which allow your case to be discussed by

many doctors and healthcare professionals in the haematology clinical team. It may also be necessary to ask for an opinion outside of this group to help either with the diagnosis or to discuss the best form of treatment.

Treatment planning

Once the diagnosis of MDS has been made, you and your doctors will decide on the best treatment for you. The treatment that you are offered will depend on the type of MDS you have, your own wishes, your age, your general wellbeing or fitness and the IPSS-R score, or in some cases the IPSS score (see previous chapter).

Before your treatment starts, your doctor or nurse will explain the benefits and side effects of the chosen treatment so that you can give your consent. It is likely that you will need to sign a consent form to agree to the treatment. If you are unsure about anything, do ask, as MDS is a complicated disease to understand.

The BSH MDS guidelines recommend that all patients who are newly diagnosed with MDS are discussed with a regional or national expert in MDS given that the disease is rare. You are entitled to ask your doctor if they have done this. The NHS also allows you to ask to see a regional or national expert in MDS if you think that this would help you.

Not all patients need active treatment, as some do not have any symptoms. If you are not starting treatment, you will have regular check-ups which is often referred to as 'watch and wait' or 'active monitoring'.

Broadly speaking, treatment of MDS will include one or more of the following:

- Supportive care – this aims to control the symptoms of MDS.
- Non-intensive treatment – this treatment tries to slow down the progression of MDS and improve your blood counts.
- Intensive chemotherapy – this involves giving high doses of chemotherapy in hospital.
- Stem cell transplant – this gives your body new stem cells so it can grow new healthy blood cells in the bone marrow.



For more information on 'watch and wait', go to **[bloodcancer.org.uk/watch-and-wait](https://www.bloodcancer.org.uk/watch-and-wait)**

There's more information about how blood cancer treatment is planned and making treatment decisions on our website at **[bloodcancer.org.uk/treatment](https://www.bloodcancer.org.uk/treatment)**

Unfortunately, most people's MDS cannot be cured, but MDS can usually be controlled and often improved.

The first question that your doctor will ask themselves is whether there is a treatment option that has a chance of curing the MDS. The only treatments that can possibly cure MDS are either a stem cell or bone marrow transplant from another person or, very rarely, intensive chemotherapy.

If a stem cell transplant is an option for you, you will be identified early so that a search for donors can be started and a transplant considered at an early stage.

What is a clinical trial?

Research into MDS continues worldwide to improve our knowledge of why MDS occurs, how individual types of MDS behave and how best to treat the condition. Today we benefit from the thousands of patients who have been part of clinical trials and research studies in the past. The words 'research', 'trial' or 'new drug' sometimes scare people, but rest assured, patients receiving new drugs in a trial are monitored very closely for side effects.

Your doctor may discuss with you a clinical trial available at your hospital; however, you cannot be entered into a trial without your permission. The trial needs to be fully explained to you, and you need

to have time to think about the treatment before deciding. This is called 'informed consent'. If you agree to be treated in a clinical trial, you can still change your mind at any point and come out of the trial. If you decide not to go into a clinical trial, you will be given the best-proven treatment available. Please ask if there are any clinical trials suitable for you available in your hospital or at your nearest specialist centre.

When you have a bone marrow test to diagnose MDS or monitor how well treatment is working, your doctor may ask your permission to store some of your blood or bone marrow for future research into the biology of MDS (what causes MDS). There will be an information sheet for you to read and you will then be asked to give your informed consent for this research. Remember to ask your research team if you have any questions.

Supportive care

All patients will need supportive care at some stage, either alone or to support other treatments being given. Supportive care is not directed at the underlying disease but rather at controlling the symptoms and complications caused by the disease. The nature and extent of supportive care needed depends on which blood cells are affected and exactly how low the blood levels fall. Most patients will need blood transfusions at some stage.

We explain various supportive treatments you may have on the next few pages.

Treating anaemia

Most patients (but not all) diagnosed with MDS are anaemic. This can cause symptoms such as tiredness and shortness of breath, affecting your quality of life. Some patients continue having a normal or reasonable quality of life despite anaemia and so will not necessarily need treatment for the anaemia at that stage. Other patients will need blood transfusions to improve the symptoms caused by the anaemia. The haemoglobin (Hb) level in your blood results will show your level of anaemia.

Growth factors

Blood cell numbers can sometimes be increased by the use of growth factors. Growth factors are like natural 'hormones' that stimulate our blood production. We all make these growth factors every day. For example, erythropoietin (sometimes known as 'EPO') is a growth factor that increases red blood cell numbers. Granulocyte-colony stimulating factor (or 'G-CSF') increases white blood cell numbers. Not all patients are suitable for this treatment, and only some MDS patients will respond. Your doctor can advise you on your suitability for growth factors. EPO is considered a safe treatment in MDS.

Growth factors are given as an injection under the skin. The number of injections needed will vary

from patient to patient. A district nurse can give the injections, or you (or a family member) can learn how to give the injections yourself. The skin around the injection site may become irritated, so it is best to regularly change the injection site.

Do talk to your nurse(s) about this and also the common side effects that you may expect.

Blood transfusions

Blood transfusions are a very important part of your care. They will be considered if you have symptoms from anaemia. There is no set haemoglobin level at which a blood transfusion is given, but your doctor will assess your symptoms and you will decide together. The frequency of transfusions will vary between patients; some need transfusions every few months whilst others need one every couple of weeks. Usually, once you have started having regular blood transfusions, the length of time between transfusions will gradually get shorter.

If you find that your symptoms of anaemia come back well before your next transfusion is due, contact your haematology team and discuss whether the interval between transfusions should be shorter, or the number of units of blood increased. This varies between patients. An improvement in your symptoms after having a transfusion may not be immediate, sometimes it can take a few days to start feeling the benefit.

It's important that you are transfused adequately to control your symptoms as it will help your quality of life. Discuss this with your haematology team.

With every unit of blood you receive from a transfusion, you will receive an excess amount of iron. Over time this can build up in your body and may possibly cause damage to certain organs, like your heart or liver. Because blood transfusions are rich in iron, it is important that you do not take additional iron tablets unless your doctor prescribes them.

There is still uncertainty about whether too much iron in your body is always harmful. The level of iron in the body will be regularly checked if you are on regular transfusions and treatment will be considered if there is a build-up of excess iron. This treatment is called iron chelation; however there remains uncertainty about the benefits of removing iron. Whether you are offered iron chelation therapy or not will depend on the likely benefits versus the likely disadvantages in your individual case.

This will be discussed with you before you make a decision to start iron chelation. It is important that you do not reduce the number of blood transfusions



We have a fact sheet, **Blood transfusions**, which explains the different types and how they are given – see **page 117**.

you receive due to the concern about your iron levels, as this may not adequately control your symptoms.

Desferal (deferoxamine) is a drug used to treat the build-up of excess iron and is given as a continuous subcutaneous injection under your skin by a pump. There are special teams that can teach you how to administer the drug at home. Exjade is another iron chelator and comes in tablet form, however in most cases this is only available for patients who cannot tolerate subcutaneous Desferal, who have serious side effects on Desferal or where it is thought not to be working adequately.

Both treatments can have certain side effects and often need to be continued for a long period of time to be effective. Your doctor can discuss this with you. Don't hesitate to discuss your iron levels with your doctor at any time during your treatment.

Platelet transfusions

About half of MDS patients will have a reduced platelet count at diagnosis (this is called thrombocytopenia). The platelets may also function poorly and this means that bruising and bleeding can sometimes be a serious problem in MDS. If you have a low platelet count, it is usually advisable to avoid blood-thinning agents and non-steroidal anti-inflammatory drugs.

However, this should be discussed with your doctor as there are exceptions where the benefit you will receive from these drugs outweighs the risks.

Platelets can be transfused but because they only last about four days, they are not routinely given even when the platelet count is very low. But if you have an infection, are on blood thinners or have suffered from bleeding, you might benefit from platelet transfusions to keep your platelet count at a higher level. Your doctor or nurse will inform you when this is necessary.

Antibiotics

It is important for you to understand that patients with MDS have a higher risk of developing infections. Antibiotics are not usually given to prevent infections, as they cause side effects and may cause the bacteria to become resistant. But if you do get an infection, this should be treated quickly with antibiotics, and you may need to be admitted into hospital so that the antibiotics can be given through a vein (intravenously). Most specialist units will have a direct phone number to call for advice in the event of a fever occurring.



Our fact sheet **Understanding infection** explains more about antibiotics and reducing your risk of infection – see **page 117**.

If you are feeling unwell, check your temperature. If it is raised, or you experience shivers, contact your specialist nurses at the hospital or call the helpline number you have been given.

Non-intensive treatment

Treatment extending beyond supportive care can be classed as low-intensity, high-intensity or high-intensity with a stem cell transplant.

Low-intensity or non-intensive treatment aims to slow the progression of the disease. It may be considered if your blood counts are quite low or falling, or if there are signs that the disease is developing into leukaemia. The idea is to treat the disease with as few side effects as possible, thereby maintaining a good quality of life. These treatments will not cure your MDS but may 'modify' the disease. These treatments are usually given as an outpatient.

Hypomethylating agents (HMA)

Hypomethylating agents work on the behaviour of cancer cells at the DNA level and can turn genes on and off. Drugs such as azacitidine work to improve bone marrow function and slow the progression to leukaemia. They are currently used in high risk MDS patients (IPSS Intermediate-2 and High categories) who are not fit enough for a stem cell transplant.

Azacitidine is usually given as an injection under the skin. Side effects can include:

- mild nausea
- diarrhoea or constipation
- skin irritation at the injection site
- becoming more prone to infections (due to lowered blood counts).

Lenalidomide

If you have a certain type of MDS which has deletion of part of chromosome 5 (this may be referred to as the 5q minus syndrome or del 5q), you may be offered lenalidomide if you are anaemic.

This is taken orally as a capsule and works in several ways to suppress the MDS cells, including altering the immune system. Therefore, it is often referred to as a type of immune modulation therapy. On starting the treatment, your blood counts fall before a response is seen. During this early stage, you may need transfusions of blood and/or platelets. Some patients also need G-CSF.

Other side effects can include:

- rashes
- fatigue
- diarrhoea
- a small increased risk of blood clots.

As lenalidomide can cause birth defects, you must avoid getting pregnant whilst taking the drug.

Immunosuppressive therapy

In a small number of patients with MDS, the number of the bone marrow cells is unusually low (termed hypoplastic). This is similar to a blood disease called aplastic anaemia. Patients can sometimes respond to drugs targeted at suppressing the immune system, such as anti-thymocyte globulin (ATG) or ciclosporin.

Intensive chemotherapy

If you have high risk MDS, you may benefit from intensive chemotherapy. It is the same treatment that is used to treat acute myeloid leukaemia and aims to kill a significant proportion of the diseased cells from your bone marrow to allow the bone marrow to work normally again (remission). The treatment has a high number of side effects so you need to stay in hospital for four to six weeks for each course.

A small proportion of people may be cured by intensive chemotherapy alone, although usually when a donor is available, a stem cell transplant will follow. Achieving remission, even if not a cure for the disease, can improve your quality of life (often almost to normal quality) as long as the remission lasts.

How is intensive chemotherapy given?

Most chemotherapy is given as an infusion into a vein (intravenously), but sometimes as a tablet. It is given as a course or cycle of treatment, whereby a combination of chemotherapy is given over a number of days followed by a rest period. It is often easier for you to have a Hickman line inserted, which allows all the drugs to be given and blood tests to be taken. This is a line that is carefully inserted into a large vein and can stay in place for the duration of your treatment.

What are the most common side effects from intensive chemotherapy?

The chemotherapy used in MDS is specially designed to kill the cancer cells in the bone marrow, so your blood counts will fall after the chemotherapy and remain low for a number of weeks. Healthy bone marrow cells are also 'stunned' in a type of 'friendly fire' but can recover better than the MDS cells if remission is achieved. During this time, there can be serious, sometimes life-threatening side effects, the most common of which are:

- infections
- bleeding
- anaemia.

Other side effects can include:

- hair loss
- nausea
- vomiting
- sore mouth
- diarrhoea
- loss of appetite and taste
- skin and nail changes
- infertility.

Allogeneic stem cell transplant

A stem cell transplant, also referred to as a bone marrow transplant, offers the chance of curing the disease.

In an allogeneic transplant, healthy bone marrow or stem cells are taken from another person whose tissue DNA is identical or almost identical to yours. This means the donor is compatible with you.



We have fact sheets on **Understanding infection, Sore mouth or gut (mucositis)** and **Managing sickness and vomiting** – see **page 117**.

The bone marrow or stem cells are taken from a donor – either a family member (usually a sibling) or an unrelated donor. The donor has a simple blood test to see if they are matched to you – they do not need to have a bone marrow test. The results are usually available in two to three weeks.

As medical knowledge and experience has progressed, more patients can now be considered for a transplant. Reducing the intensity of the conditioning treatment done before the transplant also means the side effects from the transplant itself are less severe. This approach is called a reduced intensity conditioning (RIC) transplant. About one third of patients who receive this treatment are free of disease over many years but the disease may return (relapse).

A stem cell transplant has many side effects, so it's important that the decision to have one is carefully thought through by your healthcare team and yourself. It is also important to know that the side effects from a stem cell transplant can continue for a number of years after the transplant.



Our booklet **Blood stem cell and bone marrow transplants: the seven steps** explains more about the process of having a stem cell transplant – see **page 116**.

If you are suitable for a transplant, you will be referred to a specialist centre to discuss the benefits and risks of this treatment to you as an individual. Always try to take a family member or friend to the appointments.

Follow-up

Once MDS has been diagnosed, your specialist will discuss treatment options and follow-up. For some patients, this will only mean infrequent outpatient visits to check if the disease is showing signs of progressing. Sometimes these check-ups can be shared with the GP. For those patients where the disease is thought to be high risk or for those who have received active treatment, the outpatient visits may be more frequent. This will be individually tailored to you.

People with MDS can experience a range of thoughts and emotions at different times and will cope in different ways.

If you're worried, get in touch on **0808 2080 888**
or email **support@bloodcancer.org.uk**

The psychological impact of MDS

This chapter is about the emotional impact of having MDS, which can be as significant as the physical impact of the illness.

It is important to emphasise that each person with MDS will cope in their own unique way, and your healthcare team are experienced at considering your emotional needs, as well as your physical needs.

A Holistic Needs Assessment or Quality of Life questionnaire or assessment can often help to identify certain problems or help discuss them with staff.

Not everything in this chapter will apply to you, but there are some common thoughts and feelings that you – and to some extent, your relatives and carers too – may be familiar with.

Adjustment

People living with MDS sometimes experience a range of complex thoughts and intense feelings as they try to cope with the diagnosis, monitoring or treatment. This is often described as ‘being on an emotional rollercoaster’. The formal term for these emotional ups and downs is adjustment.

Adjustment is something every person will experience as they go through significant life events like divorce, bereavement or illness. It involves changes and losses of varying kinds and includes both practical and mental adjustments. In the case of an illness these include:

- getting used to being monitored
- having medical appointments and treatments
- potential loss of – or reduction in – some physical capabilities which, in turn, could affect things like employment, or personal roles and relationships
- disruption to one’s usual life patterns and routines

- questioning things normally taken for granted, like good health and future plans – perhaps making people more worried about things than usual.

Given the losses and changes involved – which to some can feel frightening – and the need to adapt to and cope with something new, adjustment can be both stressful and distressing. The good news is, while the emotional ups and downs of adjustment aren't always easy, with time most people do adapt well to their new situation.

What feelings might you experience and how can you help yourself?

This section describes many of the common emotions (and related thoughts) that people with MDS might experience. Following each description are some suggested coping strategies. These are drawn from evidence-based psychological practices, as well as feedback from patients about what has helped them. It is important to remember that not everyone will experience all of these feelings, but it is equally important to emphasise that if you have some – or all – of them, you are not alone and it is not a sign of weakness or mental health issues.

Coming to terms with your diagnosis

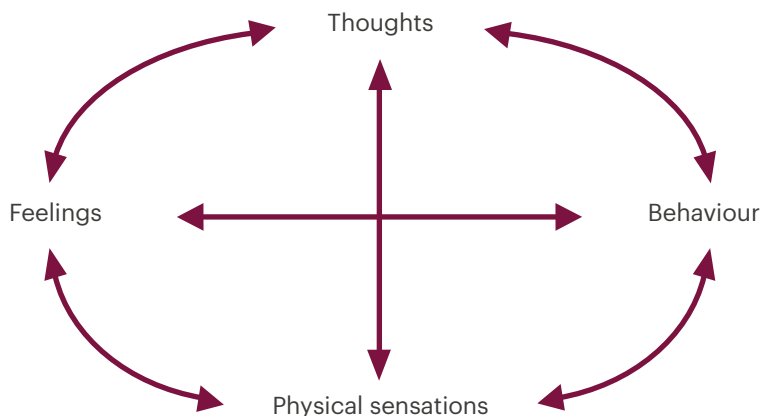
Although everyone is different, generally it is helpful to 'process' your thoughts and feelings, rather than ignore them. This means thinking about your diagnosis, including what it means to you and how you might cope. It means being aware of your feelings and being able to express them when you want to.

It can be helpful to talk about your situation with other people, both professionals and those in your personal life. Writing thoughts and feelings down can help you to process them too. It is useful to strike a balance between thinking and talking about your situation, and having periods in which you focus on other, meaningful and enjoyable things instead.

There is a link between thoughts, feelings, physical feelings and behaviour

Before we move on, it is useful to explain that within every type of mood there are four elements: thoughts, feelings, physical sensations and behaviours (the actions we take, or don't take, to cope).

Thoughts, behaviour and feelings



Also, each of these elements interacts with and affects the other, as in the above diagram.

It is hard to directly 'access' and change an emotion, whereas thoughts and behaviours and, to some extent, physical states, are more easily changed. This can help to improve emotional feelings. It is particularly effective to change negative thoughts and thinking patterns. In short, the way we think affects the way we feel.

Managing thoughts

Writing negative thoughts and worries down can be helpful. You will notice that some of them are 'valid' (this means understandable and acceptable) given your situation, but some of them are 'catastrophic' (meaning they predict the worst case scenario) or are very 'black and white' (meaning things are all good or all bad).

Here are some examples: "because of this illness, my life's ruined"; "I know the treatment won't work"; "nothing ever goes right for me"; "everything's awful"; "there's no hope"; "I must be a bad person". Take a step back and ask yourself whether those thoughts are facts or opinions. Say to yourself "is there another way of looking at this?", or "is that actually what my medical team said to me?"

Write down alternative, more helpful thoughts next to the original worries. This is not the same as 'positive thinking', as you may have some valid concerns; it is about maintaining perspective, having a balanced view, and not getting too caught up in your thoughts.

Changing behaviour

Some types of behaviour make emotional distress worse. For example, when people avoid activity, socialising and exercise (even doing basic things like having a shower and getting dressed) they make depression worse, rather than better. And, when people avoid situations that make them anxious, this also tends to make the problem worse, rather than better.

Behavioural change, which includes engaging in enjoyable and meaningful activities, doing even a little exercise, moderating alcohol consumption, and connecting with other people will help your mood. Another helpful behaviour is 'pacing'. This means doing a consistent amount of activity on a regular basis, but not overextending yourself on a good day. Overextending activities tends to result in people being so exhausted that they cannot function for a few days.



Our website has lots of practical tips and personal stories about coping with the emotional impact of blood cancer. Visit [bloodcancer.org.uk/living-well](https://www.bloodcancer.org.uk/living-well)

Specific emotions and coping strategies

Shock, disbelief, helplessness and feeling out of control

These feelings and sensations are common when people experience something outside of the realm of their normal experience, like a diagnosis of a serious illness. The situation can feel threatening and people wonder whether they can cope.

These thoughts and feelings can be so overwhelming that people become shocked or numb as a means of protecting themselves. Some people describe a sense of unreality.

Coping strategies:

- Time is needed for the information to sink in and to be 'processed.'
- It can be helpful to talk things through with others and to express feelings. This helps people to make sense of their situation and to think about how they will cope.
- Having access to the right information at this time is important. It can be difficult to take everything in, so it can be useful to write down questions that need answering or clarifying by the healthcare team.

- 'Grounding' techniques can be useful. These are simply things people can do to bring their awareness to the reality of the present moment, in other words to feel less detached or unreal. You can find more information on grounding techniques at www.healthyplace.com.

Worry, anxiety and living with uncertainty

MDS often carries with it a degree of uncertainty which can lead to worry and anxiety. It is normal to experience fear about something which is threatening. The emotional response to fear is anxiety, or even panic. This tends to be driven by the physical response to fear, which is a release of adrenaline into the bloodstream. This leads to many of the physical symptoms of anxiety like increased heart rate and dry mouth.

The mental aspect of fear is worry. This is what people do as they try to predict and control things that might happen in the future. While it is normal for people to worry about their illness to some degree, excessive worry will lead to chronic anxiety and exhaustion.

Coping strategies:

- Managing the physiological part of anxiety is key as this will help to reduce the level of fear and stop the pulse – and thoughts – from racing.
- To do this, it is necessary to reduce hyperventilation (over breathing) and excessive adrenaline production, which are always present in anxiety.
- Slow, controlled breathing is the most effective method. Practices like mindfulness and meditation can be useful, but there are also a number of different breathing exercises that are helpful. For examples of these online, visit www.getselfhelp.co.uk and www.patient.co.uk
- Reducing tension in the muscles is another means of alleviating anxiety.
- A widely-used technique is called ‘progressive muscle relaxation’. This gets people to consciously tense and un-tense their muscles to induce relaxation.
- Notice your negative thoughts and worries and write them down to challenge them.
- Take gentle exercise.

- Various forms of distraction, or mental exercises like Sudoku, can help.

Finally, a vital aspect of managing worry is to accept that some things you cannot know in advance or control. Also, while it is possible to reduce some of the symptoms of anxiety, it is not possible to eliminate them altogether. As human beings we all live with a degree of anxiety. A useful means of managing uncertainty is to focus on the 'here-and-now' – on the things you can change, and on the things that you find meaningful and enjoyable in the present moment.

Anger

It is common for people to feel angry that they have been diagnosed with a serious illness. For a number of reasons it can feel confusing, unfair, or that it is outside of their control – for example if the illness is rare, if they believe that they have a healthy lifestyle, if there's no history of similar illnesses in their family, or if they believe that they have already had too many problems in life to cope with. Sometimes it can be difficult to know what to do with feelings of anger or to understand at what the anger is directed. As a result anger can sometimes get directed at loved ones, or even towards oneself.

Coping strategies:

- Although a sense of disbelief or injustice at being diagnosed with MDS is valid (and common), dwelling on the thoughts behind it tends to make the anger worse. Talk things through with others.
- Write down some of your thoughts and notice those that keep the anger going; try to change them or distance yourself from thoughts about things that have no explanation or you can't change.
- Use relaxation techniques, or exercise, for managing the physiological symptoms of anger (similar to those in anxiety, and also driven by adrenaline).
- 'Venting' anger at others tends to be self-defeating because it alienates people, rather than eliciting feelings of compassion from them.
- Self-soothe. Treat yourself to things you enjoy; treat yourself with compassion.



Useful online resources to help you manage stress include:

**www.helpguide.org; www.getselfhelp.co.uk;
www.nhs.uk/conditions/stress-anxiety-depression**

Stress

We experience stress when we feel that we are under too much pressure or have too many demands being made of us, and that we don't have the resources to cope. Understandably, people can feel like this at times when they are ill and trying to cope with the demands of treatment as well as other concerns such as financial, employment or relationship issues.

The emotional symptoms of stress can include low mood, anxiety and irritability.

Coping strategies:

- Relaxation techniques (controlled breathing, progressive muscle relaxation) and/or exercise to manage the physical, adrenaline-fuelled aspects of stress (which are the same as those in anxiety and anger).
- Notice the negative thoughts which contribute to anxiety, tension and irritability, producing adrenaline as they arise: "this is unbearable", "I can't cope".
- Challenge negative thoughts by writing them down and coming up with more helpful ones e.g. "although this is difficult, I can cope (especially with support)".

- Plan, prioritise, break things down into manageable 'chunks' (writing this out is helpful).
- Pace yourself, rather than doing too much or trying to cope with everything at once.
- Take breaks and 'time out'.
- Ask for help and support.
- Maintain a 'here and now' focus on things that are enjoyable and meaningful to you.

Guilt and blame

Although becoming ill is never anyone's fault, it is common for people to experience feelings of guilt and blame about their illness. For example people might question whether they became ill because of something they did, or their 'lifestyle'. Some people might think that they are a burden on other people because they need their help, or because they are not functioning as they once did. Although these thoughts are common, they are not valid. They can be part of people's attempts to find meaning in the situation, but what they do is to make people feel bad and distressed about themselves.

Coping strategies:

- Write guilt and blame thoughts down and try to come up with more balanced and rational thoughts.

- Don't dwell on these negative thoughts.
- Think about what you would say to a close friend or loved one if they were having these thoughts and feelings – and apply this to yourself.
- Make a conscious effort to be more compassionate towards yourself.
- Do some things which are comforting and soothing.

Sadness, low mood, hopelessness and despair

It is natural and normal for people to experience feelings of intense sadness at times when they are ill. Sometimes it can feel that things aren't going well or that they will never be the same again. Some days people can feel very down, but usually these feelings are temporary and people tend to say that they have 'good days and bad days'.



Useful online resources about depression include:
www.getselfhelp.co.uk; www.nhs.uk/conditions/stress-anxiety-depression; www.helpguide.org/articles/depression/dealing-with-depression

However, when people feel persistently sad and hopeless for two weeks or more – and when these feelings are combined with a lack of interest or pleasure in life, disrupted sleep and appetite, feeling worthless, and thinking they would be better off dead, this is not sadness, but depression.

To some extent, sadness, low mood and clinical depression sit along a continuum. At one end, sadness tends to be an appropriate response to a specific situation, which fluctuates and gradually diminishes over time. In the middle, people can have ‘down days’ or ‘feel blue’. At the other end of the spectrum, depression (often called clinical depression) is more severe and persistent, and it affects the whole of a person’s life and stops them from functioning.

Dwelling on negative thoughts is one of the things that makes low mood much worse and keeps it going. Often the thoughts are self-critical and hopeless in nature; they are nearly always ‘black and white’ or catastrophic. It can be hard to ‘see’ or believe anything positive about life, but all too easy to notice and believe negative things. As with the other emotions, writing down negative thoughts and trying to change them can be helpful, as well as talking things through with others. This helps people to gain some perspective and to feel less hopeless.

The other thing that helps depression is doing more and engaging with others. This helps to increase a sense of pleasure and reward from life.

Coping strategies:

- Activate yourself as much as possible; do more, rather than less. Take gentle exercise and don't stay in bed or on the sofa.
- Connect with other people.
- Consciously plan and schedule activities, social time and pleasurable things.
- Try to 'capture' negative thoughts and come up with more helpful and balanced thoughts.
- Remember to ask yourself: "Is this a fact or an opinion?"; "What's the evidence?"; "Is there another way of seeing this?"; "What would I say to my best friend or partner if they thought this?"

It is often helpful to seek support if you are sad or low in mood, but it is essential to do so if you are depressed, especially if you are having suicidal thoughts. If you are feeling depressed, talk to your GP and to your healthcare team so that they can organise formal support for you. Talking therapies can help, and medication if necessary.

Grief

Grief is what people experience when they are mourning people, things, or aspects of themselves that they have lost. Grief includes most of the emotions described above, especially sadness, as well as a kind of yearning for what has been lost (in other words, you wish you could have it back). In the case of illness this might include previous roles and responsibilities, previously enjoyed activities, fertility, certain freedoms and choices, health and vitality. As grief is a normal response to loss, it cannot be rationalised away. Loss is something that people can learn to live with – and cope with – over time, especially as they adapt to their changed circumstances and engage with other aspects of life.

Coping strategies:

- Although grief is a normal process, preoccupation with certain types of negative thoughts and beliefs will make it worse and keep it going e.g. “I cannot cope without X, my life isn’t worth living now”.
- It can help to write down and challenge thoughts like this.
- It is especially helpful if you can talk about your feelings and about what, or who, has been lost. For a while, many people who are grieving need to be able to ‘tell their stories’ again and again.

Summary

A diagnosis of MDS affects all of you, not just your body. It is common to have a complex mixture of thoughts and feelings. Although this can be unpleasant, this is a normal response to a major life event. Emotional distress of varying kinds can be experienced at any point in your 'journey' but it is important to remember there is support out there and ways in which you can help yourself.

Talk to your specialist nurse and reach out to the MDS support groups that are widely available and can help



We have a section on our website dedicated to living well with blood cancer. It contains lots of practical tips and personal stories. Visit bloodcancer.org.uk/living-well

**MDS can have an impact
on your day-to-day life, but
remember that information
and support are available.**

If you're worried, get in touch on **0808 2080 888**
or email **support@bloodcancer.org.uk**

Living with MDS

A diagnosis of MDS will have implications for your daily life. Knowing in advance what to expect might alleviate some of the stress or worries around this.

Information about the disease and possible complications can help you recognise when to seek medical attention or ask for further support. It also can give you the feeling that you are more in control.

Hospital visits

A diagnosis of MDS will inevitably involve regular hospital visits. The frequency of these can vary greatly depending on the severity of the symptoms and the progression of the disease. Patients with low risk disease might only need monitoring every

few months or even yearly, while others might need weekly checks. Your doctor or nurse will give you guidance on how often visits and blood tests will be needed.

All patients diagnosed with MDS have the right to be referred to a Centre of Excellence for MDS (further details are at the back of this booklet). These are hospitals with expertise in this rare disease and the availability of new drugs via clinical trials. You can ask your doctor if you would benefit from a referral to a Centre of Excellence. You can also ask for an additional opinion if you have questions about your treatment or disease management.

The National Institute for Health and Care Excellence (NICE) guidance, published in 2003, promotes that all haemato-oncology patients should have a designated clinical nurse specialist (CNS) who is available to provide support and information. If you have not been introduced to a CNS, ask your doctor if there is one available in the hospital where you are treated and request their contact details.

Blood results

Most patients will learn to keep a record of their visits and blood results. There are specially designed diaries or apps for your mobile phone that can help you record these results. This can be valuable information, especially if you are under the care of more than one hospital or department.

Knowing your own blood levels can help you understand why you have certain symptoms and what to do in those situations. You can ask your nurse or doctor to explain the results to you.

The most useful levels to know are:

- Your Hb or haemoglobin (contained in red blood cells) – Hb carries oxygen around your body and is an indicator of whether you are anaemic or not.
- Your platelet count (or thrombocytes) – when these are low you can be prone to bruising or bleeding.
- Your white blood cell count – these are cells that fight infections.
- Your neutrophil count – these cells are a type of white blood cell. Neutrophils are the first line of defence when there is a bacterial infection. When these cells are low, you are said to be neutropenic, and this can make you more susceptible to infections.

Infection and reducing the risk of infection

When you are neutropenic (have low levels of neutrophils) and you feel unwell or feverish at home, it is very important to immediately seek medical attention at your nearest hospital. If you are alone or too unwell to leave the house, call an ambulance so that you can be brought to hospital. Patients with the combination of an infection and neutropenia can deteriorate rapidly and should be started on intravenous antibiotics as soon as possible. If you don't have a thermometer, it is advisable to buy one so that you can measure your temperature when you are at home.

Call your hospital team if your temperature goes above 38°C or you experience shivers (rigors).

Many patients with MDS will be more susceptible to infections, because even if their white cells are not low, they are 'dysplastic' and might not work as well as they should. Infections may occur more frequently and also last longer than normal. Patients receiving treatment for their MDS may be more vulnerable to infections especially if the treatment causes a reduction in white cell numbers. Sometimes they are started on drugs to prevent infections.

Good hand hygiene is the best way to avoid catching bacterial infections. There are lots of gels for sale but normal hand washing with water and soap is just as effective. In particular, make sure that you wash your hands after using the toilet, when preparing food, before you eat, and after gardening or touching animals.

Try to avoid people who are unwell and ask your friends and family not to visit when they have cold or flu symptoms.

Normal food hygiene rules apply when you have MDS. When you are on treatment and especially when your neutrophil level drops, you may be asked to avoid certain foods. This varies from one hospital to another. Ask your doctor or nurse for instructions for your specific situation and get general advice from the patient support organisations in this booklet.

When you are planning to travel, ask your doctor if you should take any antibiotics with you, especially if you have experienced picking up infections easily. This may help to avoid any problems while abroad.



Our fact sheet **Understanding infection** will tell you more about managing your risk of infection – see **page 117**.

If your neutrophil count is low and you have regular infections, you may benefit from injections that can boost your neutrophil levels. G-CSF (granulocyte-colony stimulating factor) is a drug that can be given by injection under the skin. It is a hormone that is normally produced in the body and stimulates the growth of white blood cells in the bone marrow. The injections can cause pain in the bones and muscles which can usually be relieved by taking a mild painkiller, like paracetamol. You can be taught to give yourself these injections, or a family member, GP or nurse can do it instead.

Nutrition and exercise

Eating well and keeping a healthy weight will give you more strength and energy. A healthy diet includes:

- lots of fruit and vegetables
- a good proportion of carbohydrates (bread, rice, pasta, potatoes)
- some protein rich foods (meat, poultry, fish, nuts, eggs, pulses)
- some dairy products
- small proportion of foods that are high in salt, fat or sugar
- plenty of water.

You are unlikely to benefit from an increase in iron rich foods as most patients with MDS will have normal or high levels of ferritin (a protein that stores iron) levels. There are many theories about specific diets and cancer. Always discuss with your nurse or doctor before making any changes to your diet.

There is no specific guidance with regards to exercise and MDS. As long as your energy levels allow, you can be as active as you like to be. If your platelets are low, however, you will need to avoid contact sports and be careful with falls or bumps as these may cause serious bleeding.

In general the more active you remain before, during and after treatment, the easier you will recover after having treatment. Some hospitals will provide exercise programs for patients during and after treatment. Ask your nurse or doctor if you want more information about this.



There are stories and tips about eating well and keeping active on our website at **bloodcancer.org.uk/living-well**

Our booklet **Eating well with neutropenia** has advice on how to avoid infections from food – see **page 116**.

Fatigue

Fatigue is one of the most widely reported side effects of low haemoglobin levels. Fatigue or lack of energy can seriously impact on your quality of life. A blood transfusion can improve fatigue temporarily – for some the improvement lasts a few weeks, and for others it may last longer. Treatment for MDS can initially make your fatigue worse but if the treatment is effective and your blood levels recover, fatigue levels can improve over time.

When you feel fatigued you may find it hard to concentrate or make decisions. The worries of having MDS and dealing with treatment can also add to the feeling of being tired all the time.

Adjusting your lifestyle to your energy levels can be a difficult process. Some general tips on how to deal with fatigue include:

- Have a regular sleep routine – try going to bed and waking up approximately the same time every day and try to avoid lying in.
- Take part in regular, gentle exercise to maintain your fitness levels as much as possible.
- Use ready-made meals if cooking is too tiring, so you keep your energy just for eating.
- Wear clothes that are easy to put on and take off.

- Sit down on a plastic chair to shower or wash your hair.
- Sit down when doing certain jobs, like ironing or cooking.
- Reserve your energy for what you find important and build rest periods around those times.
- Avoid stimulants before going to bed such as alcohol, coffee, tea or chocolate, or using laptops, tablets or mobile phones.
- Keep your bedroom quiet and at a comfortable temperature.
- Ask for help from family and friends.
- Talk about your worries with family, friends or your doctor or nurse, or patient support groups.
- Discuss your fatigue with your doctor or nurse.



Our website has a section about fatigue, with tips for managing it and lots of personal stories about how people cope with fatigue. Visit **[bloodcancer.org.uk/living-well](https://www.bloodcancer.org.uk/living-well)**

Sexuality and fertility

For some people, sex is an important part of life; for others it might be less important. A diagnosis of MDS can impact your sex life in several ways. For example, you may feel more fatigued and want to reserve your energy for other activities; the treatment sometimes requires you to be admitted to hospital and as a consequence separates you from your partner; you may feel less attractive due to changes to your body, such as hair loss, skin changes or reduction in weight; or your worries may make you feel less interested in sex. Treatment with chemotherapy can also make sex more difficult as it can cause changes in the mucous membranes resulting in dryness and painful intercourse for women and erectile problems for men.

If you are in a sexual relationship it may help to talk to your partner about the changes you are experiencing and how you are feeling. Your partner may struggle with the subject as well and wait for a sign that you are ready to talk about it. Alternatively, you may want to talk to your GP or nurse who may be able to put you in touch with a sexuality expert or counsellor.

Certain treatments for MDS can have consequences for your fertility and during some of the treatments you will be asked to take measures to prevent a pregnancy.

Lenalidomide is a drug that is NICE approved for a specific group of MDS patients. It can cause birth defects and you will be asked to use contraception during and after this treatment. The same applies for patients that are treated with chemotherapy drugs. Most patients will be permanently infertile after an allogeneic transplant.

Men have the option to freeze their sperm before starting their treatment. If treatment does not need to be started urgently, women also have the option of freezing their eggs. The medical team should discuss these options with you when treatment is required. Do not hesitate to raise these issues yourself if you feel this is important to you.

Changes in sex life and possible infertility may cause a range of difficult feelings. Do speak with someone close to you or your doctor, nurse or counsellor if this is negatively affecting you, and ask for professional support if you feel you need this.

Work and finances

MDS and its treatment can sometimes lead to difficulties relating to your work life. Sometimes it leads to temporary sick leave or a reduction in working hours but it can also mean that you have to stop work altogether. This will most likely have financial consequences for you and your family.

Your consultant can guide you in these decisions and either the hospital or your GP can arrange letters to confirm your situation to your employer. It's often worth taking time to explain MDS to your employer, as it's likely they have never heard of it.

Macmillan Cancer Support has published a booklet about financial support when diagnosed with cancer. They can also give you personal advice over the phone via their helpline and you can discuss which benefits you are eligible for. Some Macmillan centres can arrange face to face meetings with a benefits advisor. Please visit the Macmillan website for more information. They can also provide financial assistance in the form of grants – ask your nurse in the hospital how to apply (see contact details for Macmillan at end of this booklet).

As MDS is regarded as a cancer diagnosis you will also be entitled to apply for a medical exemption certificate which means that you are entitled to free NHS prescriptions. Your GP or specialist nurse at the hospital can provide you with details of how to apply for this. Most hospitals will also have special arrangements for patients on benefits to claim their travel expenses back.



We have more information about dealing with work and money when you have blood cancer at **bloodcancer.org.uk/living-well**

Extra support at home

You may find that the MDS or the consequences of the treatment impacts on your independence at home. Most patients will have family or friends who can step in when certain tasks or activities need to be taken over, but not everyone will have this kind of support at home.

Speak to your GP if you need additional help at home. They can arrange a social worker to assess your situation and the support that needs to be arranged. When you are in hospital, an occupational therapist can assess your abilities and discuss the support and other resources that you need at home.

Palliative care

Some treatments for MDS can cause symptoms that require more than the normal interventions. The palliative care team can provide additional advice and support when symptoms are not easily controlled. Symptoms such as nausea and vomiting, breathlessness and pain are all examples of symptoms regularly dealt with by this specialist team. Their input can be temporary or for a longer period of time, in hospital but also in the community. Some medical treatments can be fairly aggressive and treatments provided by your palliative care team can help you tolerate the side effects of these treatments.

Not all treatments, sadly, are successful and sometimes patients have to be told that the disease is too progressive for any treatment to control it. Discussions around end of life will then be initiated. That conversation will most likely be started by your medical team.

Most hospitals will have palliative care teams that have experience in dealing with end of life and related symptom control. Alternatively, you can be referred to a community palliative care team connected with your local hospice. Additional support can be organised either at home, at the hospital or at a hospice in accordance with the wishes of the patient and carer(s).

Impact of MDS on partners or carers

As with all cancer diagnoses, MDS may also have an impact on other members of the family. As MDS is often diagnosed in the elderly, there may be other health issues in the family that require attention.

An initial diagnosis will inevitably cause feelings of concern and anxiety and may cause disruption to the normal life of partners and carers as well. All emotions mentioned earlier in this booklet and information about the psychological impact of MDS may very well also apply to the rest of the family or close friends.

It sometimes happens that the information needs of the patient and the partner differ, where one wants to know more than the other. This can lead to feelings of frustration, misunderstanding or anger. Coping mechanisms may differ too and cause similar feelings.

The support of the partner or carers is very important. Carers who wish to find out more on the disease can contact the organisations involved in this booklet, or Macmillan, who all recognise the important role a carer has in looking after someone with MDS. Carers can also attend support groups in confidence and ask any questions that may help them better understand the needs and care of the person with MDS. Support groups can also help with advice when the need for information differs between carer and patient.

If the responsibility of caring for someone gets too much, respite can be arranged via carers associations. Details of these groups can be found at the back of this booklet.



The **Caring for Carers** booklet from Leukaemia Care will help carers deal with some of the emotions they may face. Go to **leukaemiacare.org.uk/information-booklets**

There are a number of UK centres with a specialist interest in treating patients with MDS.

If you're worried, get in touch on **0808 2080 888** or email **support@bloodcancer.org.uk**

MDS specialist centres

Centres of Excellence

There are a number of UK centres with a specialist interest in treating patients with MDS, some of which are recognised as Centres of Excellence.

You can request to be referred to these specialist centres for an additional opinion. The referral request can be made via your GP or your local haematologist. These referrals are particularly helpful for the more complex MDS cases, or if you feel that the care or information you are receiving is not sufficient for your needs.

Additional opinions are sought by many patients across the UK. These are perfectly reasonable requests, given that MDS is a rare and complex disease. Although all haematologists will be familiar with the condition, not all of them will have the specific expertise found in specialist centres.

In general, you should expect your haematologist to provide you with the following:

- your sub-type of MDS
- your IPSS or IPSS-R score
- confirmation that your case was discussed at a regional MDT (multidisciplinary) meeting
- a discussion covering a monitoring/treatment plan
- a mention of the availability of clinical trials
- regular reviews with potential further biopsy if circumstances change
- details of a CNS (Clinical Nurse Specialist)
- information materials and details of support groups.

If you do seek an additional opinion at a specialist centre, you will still be treated at your local hospital. Your local haematologist will work together with the specialist to provide you with optimal care. This is called 'shared care'.

A specialist centre will also provide you with a dedicated Clinical Nurse Specialist – whom you will be able to consult between appointments if necessary.

The specialist centres include.

England

King's College Hospital, London

Professor Ghulam Mufti (international expertise),
Dr Austin Kulasekararaj

St James's Institute of Oncology,

St. James's University Hospital, Leeds

Professor David Bowen (international expertise)

Royal Bournemouth Hospital, Bournemouth

Dr Sally Killick

Queen Elizabeth Hospital, Birmingham

Professor Charles Craddock, Dr Manoj Raghavan

Brighton and Sussex University Hospital,

Brighton

Dr Tim Chevassut

MRC Laboratory, Addenbrookes NHS Trust,
Cambridge
Professor Alan Warren

Radcliffe Hospitals and University of Oxford
Professor Paresh Vyas

The Christie, Manchester
Dr Dan Wiseman

Northern Centre for Cancer Care, Newcastle
Dr Gail Jones

Nottingham University Hospital
Dr Rohini Radia

Great Western Hospital, Swindon
Dr Alex Sternberg

Royal Cornwall Hospital, Truro
Dr Bryson Pottinger

Worcestershire Acute Hospitals NHS Trust
and Birmingham NHS Foundation Trust
Dr Juliet Mills

St Bartholomew's Hospital, London
Professor Jamie Cavenagh

Northampton General Hospital,
Northampton
Dr Jane Parker

University Hospital Southampton,
Southampton
Dr Chris Dalley

Castle Hill Hospital, Cottingham, Hull
Dr Simone Green

Scotland

Aberdeen Royal Infirmary, Aberdeen
Dr Dominic Culligan

Beatson West of Scotland Cancer Centre,
Glasgow
Dr Mark Drummond

Wales

University Hospital of Wales, Cardiff
Dr Jonathan Kell, Dr Wendy Ingram

Ireland

Tallaght Hospital, Dublin
Dr Helen Enright

Blood Cancer UK offers information and support to anyone affected by blood cancer. You'll find other useful organisations listed here as well.

If you're worried, get in touch on **0808 2080 888** or email **support@bloodcancer.org.uk**

Places you can get help and support

Blood Cancer UK

We are here for anyone affected by blood cancer, whether it's you who's been diagnosed or someone you know.

We offer free and confidential support by phone or email. We provide information about blood cancer and life after a diagnosis. And we have an online forum where you can talk to others affected by blood cancer.

- bloodcancer.org.uk
- 0808 2080 888 (Mon, Tue, Thu, Fri, 10am–4pm, Wed, 10am–1pm)
- support@bloodcancer.org.uk
- forum.bloodcancer.org.uk

UK patient organisations and support groups

MDS UK

MDS UK Patient Support Group provides information, assistance and advice to patients and families affected by myelodysplastic syndromes (MDS). MDS UK offer a helpline, newsletter, website, chat forum and meeting groups nationwide to facilitate contact with other MDS patients and their families. Based at King's College Hospital, MDS UK is the only national support group dedicated to MDS.

- 020 7733 7558 (Mon–Fri, 9am–6pm)
- www.mdspatientsupport.org.uk
- info@mdspatientsupport.org.uk

Leukaemia Care

Leukaemia Care provides information and support to blood cancer patients, their carers and loved ones. Whether they need a listening ear from our Patient Services team, someone to talk to who's been in a similar situation, a visit to one of our support groups, or good quality, trusted information about a diagnosis, treatment or side effects, we're here.

- 08088 010 444 (Freephone, Mon–Fri, 9am–10pm, Sat, 9am–12:30pm)
- www.leukaemicare.org.uk
- support@leukaemicare.org.uk

MPN Voice

Provides support specifically for those with myeloproliferative disorders (MPNs).

- 07934 689 354 (Mon–Fri, 9am–5pm)
- www.mpdvoice.org.uk
- info@mpdvoice.org.uk

Macmillan Cancer Support

Provides a helpline, information on all types of cancer, financial advice and travel insurance recommendations.

- 0808 808 00 00
- www.macmillan.org.uk

Anthony Nolan

Provides information to patients, families and donors regarding stem cell transplants and donation.

- 0303 303 0303
- www.anthonynolan.org
- info@anthonynolan.org

Maggie's

Maggie's offers free practical, emotional and social support to people with cancer and their families.

- 0300 123 1801
- enquiries@maggies.org
- maggies.org

International patient organisations and support groups

MDS Support Group Ireland (& Northern Ireland)

Offers MDS support in Ireland and Northern Ireland.

- 086 200 1402
- mdsireland7@gmail.com

MDS Foundation

International information and support group based in the USA. Provides further information on MDS – and contact with American MDS patients via a chat forum.

- www.mds-foundation.org
- patientliaison@mds-foundation.org

Aplastic Anaemia and MDS International Foundation

International organisation, based in the USA, supporting patients and families living with aplastic anaemia, myelodysplastic syndromes (MDS), paroxysmal nocturnal haemoglobinuria (PNH), and related bone marrow failure diseases.

- www.aamds.org
- help@AAMDS.org

Other MDS resources

MDS-Europe

The website for the MDS-RIGHT programme in Europe now hosting MDS blogs, international patient resources (including UK) and interactive MDS guidelines for diagnosis and management.

– www.mds-europe.org

Financial assistance and benefits advice

Macmillan Cancer Support

Has benefits advisers and financial guides on their support line to help with money worries.

– 0808 808 00 00

Citizens Advice

Offers advice on benefits and help with filling out benefits forms.

– 03444 111 444 (England)

– 03444 77 2020 (Wales)

– in Scotland or Northern Ireland, contact your local Citizens Advice

– citizensadvice.org.uk

Turn2us

A national charity that provides information about benefits and debt, and financial support grants available from charities.

- 0808 802 2000
- www.turn2us.org.uk

Travel insurance

Whilst it can often be difficult to get travel insurance if you have a pre-existing medical condition such as MDS, you can still go on holiday.

Fact sheets and information about travel insurance and recommended insurance providers are available from MDS UK and Leukaemia Care – see page 98.

For carers

Carers UK

Offers information about the help that's available to carers, and has a phone line for support, advice and questions about benefits and practical issues.

- 0808 808 7777
- www.carersuk.org
- info@carersuk.org

Carers Trust

Provides information to help carers get the support they're entitled to, look after themselves, get a break and talk to other carers online.

- 0844 800 4361
- www.carers.org
- support@carers.org

Glossary

Acute myeloid leukaemia (AML)

AML is a cancer of the blood and bone marrow. It is characterised by an increase in the number of myeloid cells in the marrow that do not mature and interfere with the production of healthy blood cells.

Allogeneic stem cell transplant

A procedure where bone marrow stem cells are taken from a genetically matched donor and given to the patient through an intravenous (IV) line. The donor may be related or unrelated.

Anaemia

Anaemia is where you don't have enough haemoglobin (found in red blood cells) in your blood. This can mean that your muscles don't get as much energy as they need, most commonly leading to tiredness or shortness of breath.

Blast cell

An abnormal (dysplastic), immature blood cell found in the bone marrow or peripheral blood. As they are not mature, these cells are unable to fulfil their intended function. AML develops from these blast cells.

Blood transfusion

A procedure in which whole blood or one of its components is given to a person through an intravenous (IV) line into the bloodstream. A red blood cell transfusion or a platelet transfusion can help some patients with low blood counts.

Bone marrow

The soft blood-forming tissue that fills the cavities of bones and contains fat, immature and mature blood cells, including white blood cells, red blood cells, and platelets.

Chemotherapy

Therapy for cancer using chemicals that stop the growth of cells.

Clinical trial

A medical research study involving patients with the aim of improving treatments and their side effects. You will always be informed if your treatment is part of a trial.

Cytogenetics

The study of chromosomes (DNA), the part of the cell that contains genetic information. Some cytogenetic abnormalities are linked to different forms of myelodysplastic syndromes (MDS).

Fatigue

Extreme tiredness, which is not alleviated by sleep or rest. Fatigue can be acute and come on suddenly or it can be chronic and persistent.

Full blood count or FBC

A blood test that counts the number of different blood cells.

Genomics

The study of genes and their functions, which is increasingly important to refine the prognosis of the various sub-types of MDS. In future this information may also help to personalise MDS treatments.

Haemoglobin

A protein in the red blood cells. Haemoglobin picks up oxygen in the lungs and brings it to cells in all parts of the body. On a normal blood result, haemoglobin will show as approx: Haemoglobin (HB) Males 130–180; Females 115–165 g/l.

Neutropenia

A condition in which the number of neutrophils (a type of white blood cell) in the bloodstream is decreased.

Neutrophil

A type of white blood cell that helps fight infection.

Platelet

A disc-shaped element in the blood that assists in blood clotting. During normal blood clotting, the platelets clump together (aggregate).

Although platelets are often classed as blood cells, they are actually fragments of large bone marrow cells (megakaryocytes).

Platelet count

In general, low platelet counts increase bleeding risks. A normal platelet count in a healthy individual is between 150,000 and 450,000 per microlitre of blood. This is shown as: Normal Platelet Count (PLT) 150–450 – $10^9/l$.

Stem cells

Cells that have the potential to develop into many different or specialised cell types.

White blood cell

One of the cells the body makes to help fight infections. There are several types of white blood cells. The two most common types are the lymphocytes and neutrophils. A normal count is shown as: Normal White Cell Count (WBC) 4–11 – $10^9/l$.

This section explains the different ways MDS is classified and ‘scored’ to help understand your risk and make treatment decisions.

If you're worried, get in touch on **0808 2080 888** or email **support@bloodcancer.org.uk**

Appendix

International Prognostic Scoring System (IPSS)

The International Prognostic Scoring System (IPSS) was developed by analysing information on almost 1,000 MDS patients, who mostly received only supportive care, and determining which factors best predicted disease progression and outcome. This was then used to create a scoring system based on: the percentage of blasts in the bone marrow; cytogenetics; the number of cell types affected in the circulating blood. The IPSS is now only used to decide whether patients are suitable for certain treatments that were developed in the IPSS era (1995-2012). Since 2012, all discussions with patients about prognosis should be based on the IPSS-R.

The Revised IPSS (IPSS-R)

This scoring system has used the data gathered from patients in the IPSS to further categorise patients into more defined risk groups, looking at another 7,000 patients with MDS who were untreated.

The score now has five categories which allow a more accurate prediction of expected outcome.

Both scoring systems should only be used at diagnosis and not during the course of the disease.

IPSS-R - Cytogenetic subgroups

The cytogenetic result from the patient's bone marrow sample is an important part of the IPSS-R score. The table below shows the cytogenetic risk categories. The cytogenetic category (eg 'Very good') is then the first item in the next table.

Cytogenetic category	Cytogenetic category
Very good	-Y, del(11q)
Good	Normal, del(5q), del(12p), del(20q), double including del(5q)
Intermediate	del(7q), +8, +19, i(17q), any other single or double independent clones
Poor	-7, inv(3)/t(3q), double including -7/del(7q), complex: 3 abnormalities
Very poor	Complex: >3 abnormalities

IPSS-R - Prognostic score

To calculate a person's prognostic score, we look at the variables in the left column. Each variable has a number or 'score' between 0 and 4. The numbers are then added together to give a final IPSS-R score.

Prognostic variable	0	0.5	1	1.5	2	3	4
Cytogenetics (from previous table)	Very good		Good		Intermediate	Poor	Very poor
Bone marrow blast %	≤2		>2-<5		5-10	>10	
Haemoglobin concentration (g/l)	≥100		80-<100	<80			
Platelet count (x 10 ⁹ /l)	≥100	50-<100	<50				
Neutrophil count (x 10 ⁹ /l)	≥0.8	<0.8					

IPSS-R - Prognostic scores and risk categories/clinical outcomes

The table below shows what the predicted clinical outcomes are for people with MDS with different risk scores.

Risk Score	Risk Category	Survival (median* – years)	25% AML evolution** (median – years***)
≤1.5	Very Low	8.8	NR
>1.5-3	Low	5.3	10.8
>3-4.5	Intermediate	3.0	3.2
>4.5-6	High	1.6	1.4
>6	Very High	0.8	0.73

* median = The midpoint of data after being ranked from lowest to highest. This shows that half of patients survive less than this number of years, and half survive more than this number of years.

** This column (25% AML evolution) is the average length of time that it would take for one quarter of patients to develop AML in that IPSS-R group.

*** median = The midpoint of data after being ranked from lowest to highest. This shows that for the 25% of patients who do progress to AML, half of them would progress before this time period and half of them after it.

IPSS score table

For information, we have also included the scoring table for the older International Prognostic Scoring System (IPSS).

Score	0	0.5	1	1.5	2
% of blasts in the bone marrow	<5	5-10		11-20	21-30
Karyotype	Good	Intermediate	Poor		
Number of cytopenias	0/1	2/3			

The individual scores for bone marrow blast percentage, karyotype and cytopenias are added together to give the IPSS score. The scores for the risk groups are as follows:

Low risk	0
INT-1 risk	0.5-1.0
INT-2 risk	1.5-2.0
High risk	>2.5

Definitions used in the IPSS

Karyotype (cytogenetic abnormalities)

- Good – normal, deletion of Y chromosome, del(5q), del(20q)
- Intermediate – all other abnormalities
- Poor – complex (more than 3 abnormalities), chromosome 7 abnormalities

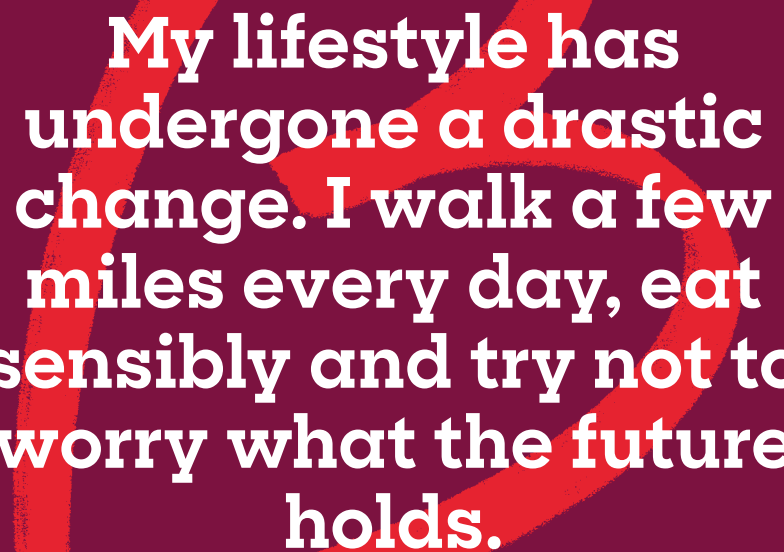
Cytopenias (low blood counts)

- Haemoglobin – less than 100g/l (or 10g/dl)
- Neutrophils – less than $1.8 \times 10^9/l$
- Platelets – less than $100 \times 10^9/l$

World Health Organization (WHO) 2008 Classification

For information, we've included the older classification of MDS. The current version is explained on page 26. This is how MDS was classified from 2008–2016:

- Refractory cytopenia with unilineage dysplasia (RCUD)
- Refractory anaemia with ring sideroblasts (RARS)
- Refractory cytopenia with multilineage dysplasia (RCMD)
- Refractory anaemia with excess blasts (RAEB)
- Myelodysplastic syndrome unclassified (MDS-U)
- MDS associated with del(5q), including the 5q- syndrome



My lifestyle has undergone a drastic change. I walk a few miles every day, eat sensibly and try not to worry what the future holds.

Anthony, diagnosed with blood cancer aged 70

Our health information

Find out more about blood cancer, its treatments and living with blood cancer. All our information is produced with expert medical professionals and people affected by blood cancer. It's available to anyone to download or order for free.

Symptoms guide

A credit-card sized guide that folds out to explain the symptoms of blood cancer.

Booklets

Leukaemia

- Acute lymphoblastic leukaemia (ALL)
- Acute myeloid leukaemia (AML)
- Acute promyelocytic leukaemia (APL)
- Chronic lymphocytic leukaemia (CLL)
- Chronic myeloid leukaemia (CML)

Lymphoma

- Hodgkin lymphoma (HL)
- High-grade non-Hodgkin lymphoma (NHL)
- Low-grade non-Hodgkin lymphoma (NHL)

Other blood cancers

- Myeloma
- Myelodysplastic syndromes (MDS)
- Myeloproliferative neoplasms (MPN)

Treatment and beyond

- Blood stem cell and bone marrow transplants: the seven steps
- Eating well with neutropenia
- Diary for anyone affected by blood cancer

My information folder

An A5 folder to keep your information in.

Fact sheets

Conditions

- Burkitt lymphoma
- Monoclonal gammopathy of undetermined significance (MGUS)
- Waldenström macroglobulinaemia (WM)

Treatments

- Blood transfusions
- Donating stem cells
- What is CAR-T therapy?
- Watch and wait - What you need to know
- Watch and wait - My blood counts
- Watch and wait - A quick guide for partners, carers, family and friends
- Watch and wait - A quick guide for employers
- Watch and wait - A toolkit for GPs and practice nurses

Side effects

- Managing sickness and vomiting
- Sore mouth or gut (mucositis)
- Understanding infection

Living with blood cancer

- If your employee or colleague has blood cancer
- My activity planner

To order or download information

Visit **[bloodcancer.org.uk/information](https://www.bloodcancer.org.uk/information)**

Call **0808 2080 888** (Mon, Tue, Thu, Fri, 10am–4pm, Wed, 10am–1pm)

Email **support@bloodcancer.org.uk**

Or use the order form on **page 128**



**We're a
community
dedicated to
beating blood
cancer.**

About us

We're the scientists who dedicate our careers to finding cures.

We're the nurses who find the right words in the darkest moments.

We're the campaigners and volunteers standing up for the people we love.

We're the bucket-collectors, race-runners and cake-bakers who make our research possible.

We're the friends, parents, children and grandparents affected by blood cancer.

Why?

Because we've invested over £500 million in life-saving research.

Because the finish line's in sight.

Because it's time to beat blood cancer.

Because we give people the support they need

People with blood cancer and their family and friends have unique support needs.

We offer free and confidential support by phone or email, provide information about blood cancer and life after a diagnosis, and have an online forum where you can talk to others affected by blood cancer.

bloodcancer.org.uk

0808 2080 888

(Mon, Tue, Thu, Fri, 10am–4pm, Wed, 10am–1pm)

support@bloodcancer.org.uk

forum.bloodcancer.org.uk

Because our research is saving lives

The money raised by our community has meant we've been able to invest £500 million in research, which has changed the outlook for people with blood cancer. Our research has led to better treatments that have dramatically increased survival rates. Right now, we're funding research projects across the UK that are finding out more about blood cancer and the best way to treat it.

Find out more: **bloodcancer.org.uk/research**



Because we campaign for better treatment and care

We work to make sure people affected by blood cancer are at the heart of Government and NHS decision-making.

We're campaigning to end delays to diagnosis, improve access to the latest treatments and help people with blood cancer get the mental health support they need.

Find out more: [bloodcancer.org.uk/campaigns](https://www.bloodcancer.org.uk/campaigns)

Because we'll beat it together

Donate

A quick way to help. Every pound brings us one step closer to beating blood cancer:

bloodcancer.org.uk/donate

Fundraise

Sign up to one of our events, or do something you enjoy with family and friends – there are lots of ways to fundraise: **bloodcancer.org.uk/fundraise**

Join your local community group

Local community groups raise money and awareness in their local area. Volunteer for yours to meet new people and get involved in local activities:

bloodcancer.org.uk/local-community-groups

Volunteer

Give your time, meet new people and experience new things by volunteering with us. There are lots of ways you can help, from your own home or in your local community: **bloodcancer.org.uk/volunteer**

Get your organisation involved

From funding a project, to becoming a corporate partner, find out how your organisation can help us:

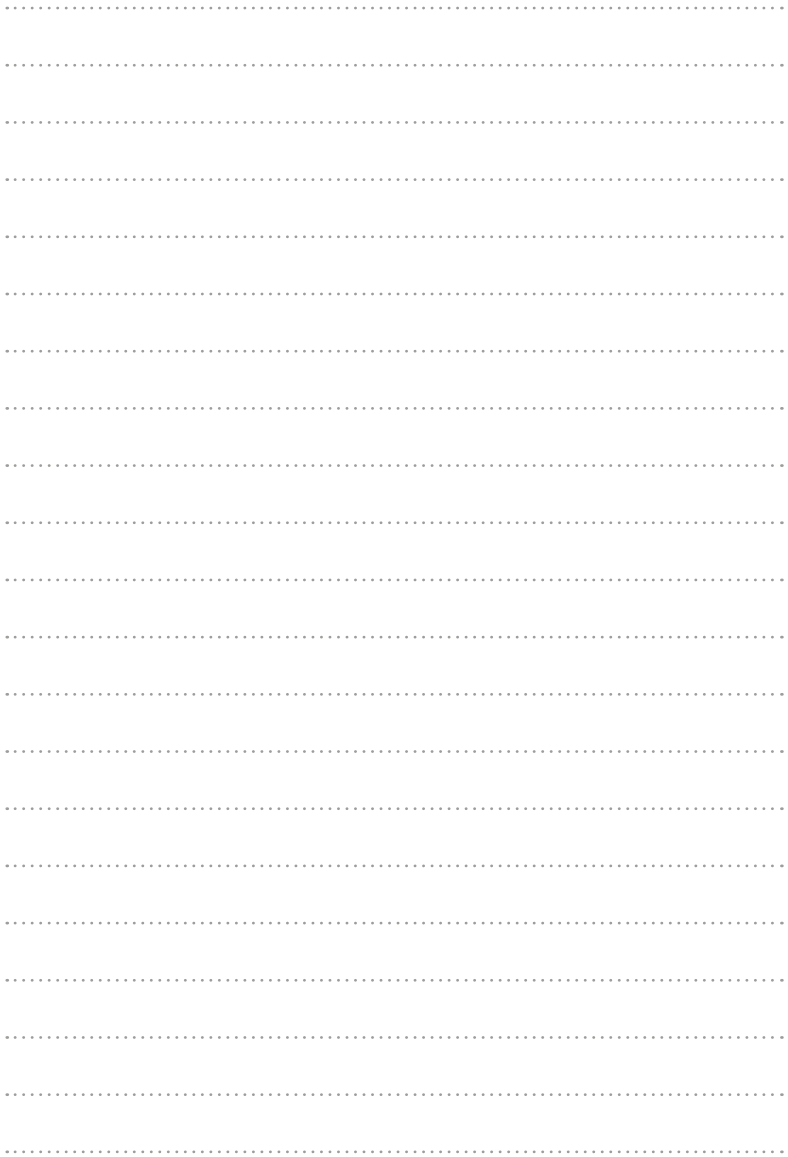
bloodcancer.org.uk/corporate-partnerships

Or call us on **0808 169 5155**



**I love being part of the
Blood Cancer UK family.
Being involved has
helped me and my family
cope with my diagnosis.**

Anna, diagnosed with blood cancer aged 39





Go to **bloodcancer.org.uk/donate**, call us on **0808 169 5155** or complete and send this form to us freepost using the address: **FREEPOST PLUS RTSU-XAYE-XZYK, Blood Cancer UK, 111 George Street, Edinburgh, EH2 4JN**

Full Name

Address

Email Phone



As a supporter, you're at the heart of everything we do. We'd love to keep you updated about our exciting work and the ways you can help, including campaigns and events that you might be interested in. We promise to respect your privacy and we will never sell or swap your details.

I'm happy for Blood Cancer UK to contact me by: Email Phone SMS

Don't contact me by post:

You can change how we communicate with you at any time.

Contact us on **0808 169 5155** or email **hello@bloodcancer.org.uk**

I'd like to donate £10 £25 £50 Other

I enclose a cheque/CAF voucher made payable to Blood Cancer UK

OR please debit my Visa Maestro Mastercard CAF card

Cardholder's name

Card number (Maestro only)

Start date Expiry date Issue number

Make your donation worth an extra 25p for every £1 at no extra cost to you!

giftaid it

I'd like Blood Cancer UK to claim Gift Aid on this donation and any donations I make in the future or have made in the past 4 years.

*By ticking this box I confirm that I'm a UK taxpayer and I understand that if I pay less Income Tax and/or Capital Gains Tax than the amount of Gift Aid claimed on all my donations in that tax year, it's my responsibility to pay any difference.

*Today's date

If you stop paying tax, change your name or address, or if you have any further questions about Gift Aid, please contact our Supporter Relations Team on **0808 169 5155**.

*Information required for Gift Aid declaration to be valid.

Order information from Blood Cancer UK

All of our information is free to people affected by blood cancer, but if you would like to include a donation with your order, please fill in the donation form over the page.

You can order more information by:

- visiting **bloodcancer.org.uk/information**
- Emailing **support@bloodcancer.org.uk**
- calling **0808 2080 888**
- or completing and sending this form to us freepost using the address: **FREEPOST PLUS RTSU-XAYE-XZYK, Blood Cancer UK, 111 George St, Edinburgh, EH2 4JN**

Please send me some information

Full Name

Address

Email

Phone

Please tell us the publications you would like us to send you, free of charge (see page 116)

.....

.....

.....

.....

.....

Keep in touch

We'd love to keep you updated about our exciting work and the ways you can help, including campaigns and events that you might be interested in. We promise to respect your privacy and we will never sell or swap your details.

I'm happy for Blood Cancer UK to contact me by: Email Phone SMS

Don't contact me by post:

You can change how we communicate with you at any time.

Contact us on **0808 169 5155** or email **hello@bloodcancer.org.uk**



Useful information and details

Date of diagnosis

My diagnosis / Type of MDS

Cytogenetic results:

Date	Details & chromosome affected	Good, normal or poor

Date	Name	Contact Details
Consultant haematologist		
Specialist nurse		
GP		
Haematology day care unit		
Haematology inpatient ward		
Emergency contact number		

Because we face it together

We're a community dedicated to beating blood cancer by funding research and supporting those affected.

Get in touch for:

- Free and confidential support by phone or email
- Information about blood cancer and life after diagnosis
- An online forum for people affected by blood cancer

bloodcancer.org.uk

0808 2080 888

(Mon, Tue, Thu, Fri, 10am–4pm, Wed, 10am–1pm)

support@bloodcancer.org.uk

forum.bloodcancer.org.uk

Your feedback on this booklet can help us improve – please send any comments to **information@bloodcancer.org.uk**



**Blood
cancer
UK**

Blood Cancer UK is a trading name of Bloodwise, 39-40 Eagle Street, London, WC1R 4TH. A company limited by guarantee 738089 (registered in England and Wales). Registered charity 216032 (England and Wales) SCO37529 (Scotland) © 2020 MDS/0319.1